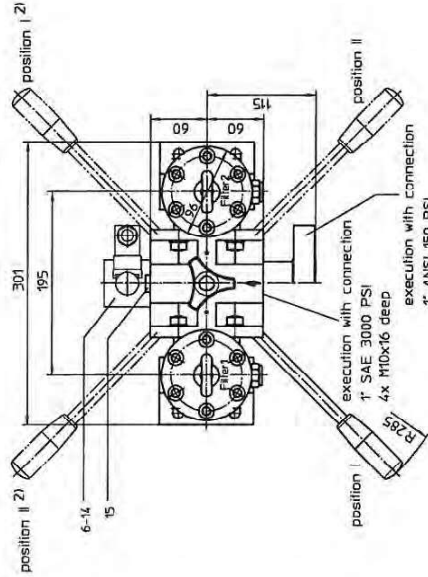
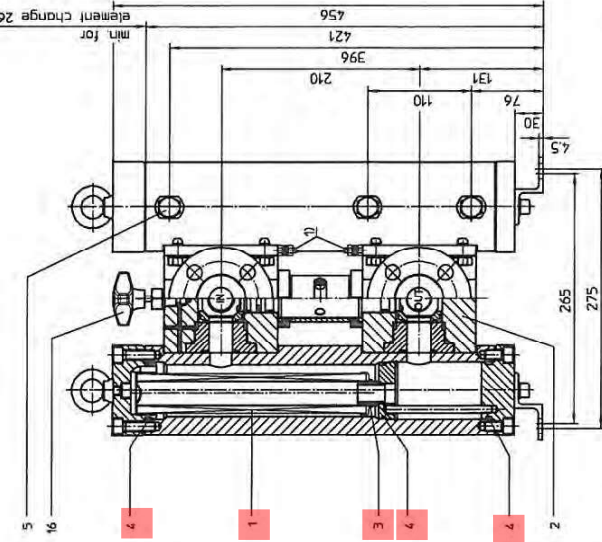


# **PRESSURE FILTER, change-over** **Series DA 101 DN 25 PN 20**

Sheet No.  
**2163 A**



1) Connection for the potential equalisation at inlet and outlet, only for application in the explosive area.

Switch lever standard in the front.

2) On request: Switch lever backside opposite to inlet and outlet. Please specify on order!

Position I: Filter 1 in operation  
 Position II: Filter 2 in operation

## **1. Type index:**

### **1.1. Complete filter: (ordering example)**

**DA. 101. 10VG. 30. E. P. - FS. 5. - - AE. -**

- 1 series: 1 2 3 4 5 6 7 8 9 10 11 12 13
- 2 DA = pressure filter change-over, according to ASME-code
- 3 nominal size: 101
- 4 filter-material and filter-fineness:  
 80 G = 80 µm, 40 G = 40 µm, 25 G = 25 µm, 10 G = 10 µm stainless steel wire mesh  
 25 VG = 20 µm<sub>nom</sub>, 16 VG = 15 µm<sub>nom</sub>, 10 VG = 10 µm<sub>nom</sub>, 6 VG = 7 µm<sub>nom</sub>, 3 VG = 5 µm<sub>nom</sub> Interpor fleece (glass fibre)  
 25 P = 25 µm, 10 P = 10 µm paper
- 5 resistance of pressure difference for filter element:  
 30 = Δp 30 bar
- 6 filter element design:  
 E = single-end open  
 S = with by-pass valve Δp 2,0 bar  
 S1 = with by-pass valve Δp 3,5 bar
- 7 sealing material:  
 P = Nitrile (NBR)  
 V = Viton (FPM)
- 8 filter element specification: (see catalog)
- 9 VA = standard  
 VA = stainless steel
- 10 connection:  
 FS = SAE-flange connection 3000 PSI  
 FA11 = ANSI-flange connection 150 PSI, sealing surface R<sub>z</sub> = 160 µm (not finer than 40µm)  
 FA12 = ANSI-flange connection 150 PSI, sealing surface R<sub>z</sub> = 16 µm
- 11 connection size:  
 5 = 1"
- 12 filter housing specification:  
 - = standard  
 IS12 = see sheet-no. 41028
- 13 internal valve:  
 - = without  
 - = with
- 14 clogging indicator or clogging sensor:  
 - = without  
 ACR = visual, see sheet-no. 1606.  
 ACC = visual, see sheet-no. 1606.  
 AE = visual-electrical, see sheet-no. 1609.  
 VS2 = electrical, see sheet-no. 1608
- 15 specification pressure vessel:  
 - = standard (PED 97/23/EC)  
 IS21 = see sheet-no. 43415 (ASME VIII Div.1)

## **1.2. Filter element: (ordering example)**

**01NL. 100. 10VG. 30. E. P. -**

- 1 series: 1 2 3 4 5 6 7
- 2 01NL = standard filter element according to DIN 24550. T 3
- 3 nominal size: 100
- 4 - 7 see type index complete filter

## **2. Accessories:**

- SAE-counter flange, see sheet-no. 1652
- shut-off valve, see sheet-no. 1655

weight: approx. 60 kg  
 Changes of measures and design are subject to alteration!

**internormen**  
 technology

Friedensstrasse 41, 68804 Altlussheim, Germany  
 phone +49 - (0)6205 - 2094-0 e-mail sales@internormen.com  
 fax +49 - (0)6205 - 2094-40 url www.internormen.com

