



# SUPPLIER DOCUMENT COVER SHEET

RNP DCU Plant Project



Supplier Name:	FAUDI GmbH
SDR Code(s):	D01-E06
Equipment / Tag Number(s):	FD-4305 A/B
Document Title:	Detail dimensional drawing
Supplier Document No:	4038498

## Supplier's Revision Record

Rev	Date	Issue State	By	Checked	Approved
3	25.07.2018	For Review	EH	TP	PG
2	18.07.2018	For Review	EH	TP	PG
1	10.07.2018	For Review	EH	TP	PG
0	13.06.2018	For Review	TP	EH	PG

## Project Document Number

Project Number		Purchase Order Number		Seq. No.	Project Rev.
172784	-	0520-201	- SD -	000010	3

## SUPPLIER DOCUMENT REVIEW STATUS

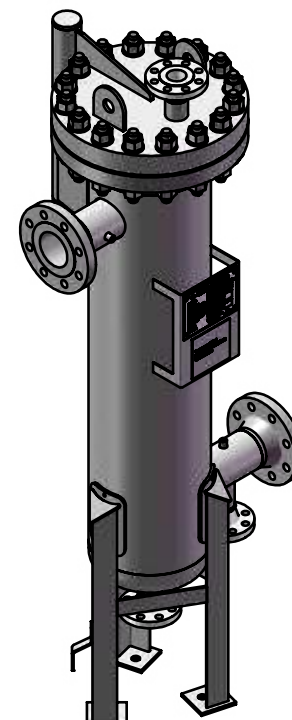
Purchaser's review of Supplier's documents does not relieve Supplier of the responsibility for correctness under the Purchase Order. Permission to proceed does not constitute acceptance of design, detail and calculations, test methods or materials developed or selected by the Supplier and does not relieve the Supplier from full compliance with the Purchase Order or any other obligations, nor detract from any of the Purchaser's rights.

## Purchaser's Review Stamp

<b>CB&amp;I</b>		
RNP DCU Plant Project No. 172784		
Engineering Review Status	By:	
Code 1 - No Comments	MTI	
	Date: 7.8.2018	
<small>These comments do not relieve the supplier of his responsibility to meet the requirements of the PO.</small>		

**Should the Supplier consider that any comments made by the Purchaser change the Scope of Supply, the Supplier shall advise the price and delivery implications of such changes within five working days of receipt. The Supplier must not incorporate such changes without prior approval of the Purchaser of the revised price and/or delivery period. RETROSPECTIVE CLAIMS WILL NOT BE CONSIDERED .**

The document consists of this front sheet plus 3 page.



Stutzen-tabelle / LIST OF NOZZLES						
Stutzen Nr. NOZZLE NO.	Nennweite NOMINAL PIPE SIZE	Nenndruck PRESSURE RATING	Dichtfläche SURFACE	Flansch Art FLANGE TYPE	Rohrstutzen NOZZLE PIPE	Benennung DESCRIPTION
N1	4"	300 LBS	RF*	WN**	Ø 114,3	INLET
N2	4"	300 LBS	RF*	WN**	Ø 114,3	OUTLET
N3	2"	300 LBS	RF*	WN**	Ø 60,3	DRAIN (BOTTOM)
N4	2"	300 LBS	RF*	WN**	Ø 60,3	VENT
N5	1/4"	3000 LBS	NPT	FEMALE	-	SAMPLE (INLET)
N6	1/4"	3000 LBS	NPT	FEMALE	-	SAMPLE (OUTLET)
N7	2"	300 LBS	RF*	WN**	Ø 60,3	DRAIN (OUTLET)
*) Ra 3,2 -6,3 µm      **) ASME B16.5						

Technische Daten / TECHNICAL DATA			
Berechnungsvorschrift DESIGN CODE	ASME Code Sec. VIII Div. 1 (without U-Stamp) El 1596 / El 1590 - PED 2014/68/EU Kategorie IV Modul G Mediumgruppe 1		
Betriebsbedingungen OPERATING CONDITIONS	Filtration FILTRATION CONDITIONS		
Betriebsüberdruck OPERATING PRESSURE	5,2 / 6,0		bar (g)
Auslegungsdruck DESIGN PRESSURE	18,5		bar (g)
Prüfdruck TEST PRESSURE	27,75		bar (g)
Betriebstemperatur OPERATING TEMPERATURE	-28 / +38 / +65		°C
Auslegungstemperatur DESIGN TEMPERATURE	-28 / +120 (Steam out: HV @ 50°C /4,5 barg @190°C)		°C
MINIMUM DESIGN METAL TEMPERATURE (MDMT)	- 28		°C
Korrosionszuschlag CORROSION ALLOWANCE	3,0		mm
Schweißnahtfaktor JOINT EFFICIENCY	0,85		
NON DESTRUCTIVE EXAMINATION	Prüfmfang Spot RT3		
	Isolierung INSULATION		
	Volumen CAPACITY		
Gewicht leer / Betrieb / Test WEIGHT EMPTY / OPERATING / TEST	440 / 525 / 540		kg
Baujahr YEAR OF FABRICATION	2018		
Werksnummer SERIAL NO.	A01690 / 2 + A01690 / 3		
Medium MEDIUM	Kerosene Product		
Dichte minimum / mittelwert / maximum DENSITY MINIMUM / AVERAGE / MAXIMUM	758 / 778 / 825		kg/m³
Viskosität minimum / mittelwert / maximum VISCOSITY MINIMUM / AVERAGE / MAXIMUM	0,6 / 0,9 / 2,5		cp
Durchflussmenge minimum / mittelwert / maximum FLOWRATE MINIMUM / AVERAGE / MAXIMUM	45,3 / 91,2 / 100,5		m³/h
Filterfeinheit DEGREE OF FILTRATION	3		µm
Filterfläche FILTER AREA	7		m²
Druckverlust max. zulässig MAX. ALLOWABLE PRESSURE DROP	1		bar (g)
Druckverlust im sauberen Zustand CLEAN PRESSURE DROP	0,2		bar (g)
PWHT	No		
Abnahme durch INSPECTION BY	FAUDI / CLIENT / NOTIFIED BODY		

Note:

- Nozzle N5/N6 are for connecting the sampling and also for the GAMMON Mini Monitor Kit

- Painting acc. Specification for Surface Preparation and Painting  
172784-00-ME-SP-00004 Rev.4 and Painting Procedure 172784-0520-201-SD-000024

	<p>SUPPLIER/SUBCONTRACTOR DRAWING DECAL RNP DCU Plant Project</p>	
---	---	---

Supplier Name: FAUDI GmbH

SDR Code(s): D01-E06

Equipment/Tag Number(s): FD-4305 A/E

Project Document Number							Purchaser's Revision
Project Number		Purchase Order Number				Seq.No	
172784	-	0520-201	-	SD	-	000010	2

Purchaser's review of Supplier's documents does not relieve Supplier of the responsibility for correctness under the Purchase Order. Permission to proceed does not constitute acceptance of design, detail and calculations, test methods or materials developed or selected by the Supplier and does not relieve the Supplier from full compliance with the Purchase Order or any other obligations, nor detract from any of the Purchaser's rights.

<b>Worksheet/ MATERIAL CARBON STEEL</b>		Allgemein- teilungen/ GENERAL TOLERANCES DIN ISO 2768-mS		Oberfläch-/ SURFACE DIN ISO 1302 Reihe 2/LINE 2	<b>Maßstab/ SCALE 1:10</b>	Gewicht/ WEIGHT	<b>SEE ABOVE</b>
Nr./ NO.		Datum/DATE	Name/NAME	E.Horst	Auftrags-Nr./ORDER-NO. Kunde/CUSTOMER:	A01690-18 CB&I - GIS	Projection/ PROJECTION 
Schutzvermerk nach ISO 16016 beachten! Copyright reserved!		Benennung/DENOMINATION 26.03.2018 E.Horst 06.06.2018 T.Pawlak		Eingetragte Maße werden bei der Abnahme besonders geprüft! DIMENSIONS WITH FRAME ARE CHECKED PARTICULAR DURING INSPECTION			
		<b>FAUDI</b>		KFF 34.301.03.10 3MY FD-4305 A/B			
2	ACTUAL DIMENSION	18.07.18	Horst	Faudt-Strasse 1 D-52059 Stadlofeld Tel.: 04242/700-7 Fax.: 04242/702-260	Zeichn.-Nr./ DRAWING-NO.	4038498	Baum/SHEET
REV. Änderung/MODIFICATION		Date	Name	D:\Faudt\Aufträge\A01-A017000\A01690-18 CB&I + GIS\A01690-18 KFF-34.301.03.10\		1 Bl.	
ANSCHLUSSE/FUNCTION FOR DATE							

NOZZLE LOADS						
	Forces (N)			Moments (Nm)		
NOZZLE No.	F <sub>L</sub>	F <sub>C</sub>	F <sub>A</sub>	M <sub>L</sub>	M <sub>C</sub>	M <sub>T</sub>
N1	3140	3140	3140	1938	1938	1938
N2	3140	3140	3140	1938	1938	1938
N3	1367	1362	1367	401	401	401
N4	1367	1362	1367	401	401	401

COMPONENT	MATERIALS
SHELL	SA-333 Gr.6
SHELL FLANGE	SA-350 LF2 CL.1
DISHEAD BOTTOM	SA-516 Gr.60N
NOZZLES - SEAMLESS	SA-333 Gr.6
NOZZLES FLANGES	SA-350 LF2 CL.1
COVER	SA-516 Gr.60N
COVER FLANGES	SA-350 LF2 CL.1
FITTINGS SEAMLESS	SA-420 WPL6
EXTERNAL BOLTS	SA-193 B7
EXTERNAL NUTS	SA-194 2H
GASKET FOR BODY FLANGE	SPIROFLEX SPV2J - SS316/GRAPHITE

LOADS TO BASE	
$F_V$	- 6283 N
$F_H$	545 N
$M$	719 Nm

# Part List

Date  
Page 25.07.2018  
1 of 2

Article 4038498 / KFF 34.301.03.10 3MY  
Job-No. FD-4305 A/B

Rev. 03

Pos.	Qty	Unit	Resource	Description Dimensions	Material Standard	Certif.	Doc. Type	Doc. No	Rev.
1	1,00	pc	4038567	WG-VESSEL - KFF 34.301.03.10	SA-516 GR. 60N	3.1	SW		02
2	1,00	pc	4038568	WG-COVER - KFF 34.301.03.10	SA-516 GR. 60N	3.1	SW		02
3	1,00	pc	4010639	GASKET SPV2J 12" 300LBS 316L/GRAP/316L	316L/GRAPHIT/316L	2.2	ANS	B16.20	00
4	1,00	pc	4039422	MANIFOLD KFF 34.301.03.10	B16.20 SS304 / 304L	3.1	SW	4039422	
5	1,00	pc	9207457	O-RING FKM 97,79X 5,33 70SH	FKM 70				00
6	1,00	pc	9153321	HEX BOLT ISO 4017- M30X 70- 8.8 GZN	8.8/GZN	STEMP	ISO	DIN EN ISO 4017	0
7	4,00	pc	4039700	MF EIMF 3.1-559 NBR 3µm EI1590 3.Ausg	DIN EN ISO 898-1 Polyamid / Glasfaser / NBR		STU	-	00
8	4,00	pc	8869810	O-RING FKM 55,00X 5,00 75SH	FKM 75				00
9	1,00	pc	4039747	PLATE KFF34.301 250X5 SS304	SS304	2.2	SW	4039747	00
10	0,00	pc	4039656	MOUNTING SPINDLE MANIFOLD - 4039422	SS304/1.4301	3.1	SW	4039656	00
11	1,00	pc	8869638	O-RING ID11.6x6.35 FKM	FKM 75				00
12	1,00	pc	4033839	PRESSURE PIECE WITH O-RING NUT D30-13X25	SS304	2.2	SW	4033839	00
13	3,00	pc	6073407	HEX. NUT M16-24032 A2-50	A2-50 W2	STEMP	EN	0024032	EN 00
14	1,00	pc	2009570	WASHER A17 DIN125 SS	ISO3506 1.4541	0	DIN	125	01
15	16,00	pc	4039657	STUD BOLT 1 1/8- 8UN 2AX210 A193 B7 GZ#	DINEN10088-3 SA-193GR.B7 / GZN	3.1	ASME	B16.5	00
16	32,00	pc	9165127	WASHER ISO 7090- 30 - 200 HV - GZN	ASME SEC.II ST/GZN DIN EN ISO 6507-1	0	ISO	DIN EN ISO 7090	0

Part List

Article	4038498	/	KFF 34.301.03.10	3MY				Rev.	03
Job-No.	FD-4305 A/B								
Pos.	Qty Unit	Resource	Description Dimensions	Material Standard	Certif.	Doc. Type	Doc. No		Rev.
17	32,00 pc	4039714	HEX. NUT 1 1/8"-8UN-2B SA-194 2H/GZN#	SA-194 2H / GZN	3.1	ASME	B18.2.2		
18	2,00 pc	4002226	WELD SOCKET 1/4 NPT 3000 lbs	ASME SEC.II SA182 F304	3.1	ANS	00B16.11		0
	0,00		----- NAME PLATE -----	ASME SEC.II					
20	1,00 pc	4039713	NAME PLATE 200X140X2 FUER A01690/2&3	SS304		SW	4039713		00
21	1,00		TYPENSCHILD-ELEMENT EI - FAUDI-AVIATION						
22	1,00		TYPENSCHILD-BEHAELTER - FAUDI-AVIATION						
	0,00		Provision from FAUDI Aviation						
23	7,00 pc	4035740	BLIND RIVET 3 x 10 STAINLESS STEEL	SS304/SS304	0	ISO	15977		00
24	1,00 pc	4035743	SEMI-TUBULAR RIVET 5X12	DIN EN ISO 15977 CU-ZN		DIN	7338-B		00
	0,00		-----	DIN 7338					
	1,00 pc	4039724	GASKET F. PRESSURE TEST -A01690-18 Pos.3		0				
	0,00 pc	4038499	SPARE PARTS FOR COMM. & START-UP - A01690	CARBON STEEL					2