



SUPPLIER DOCUMENT COVER SHEET



RNP DCU Plant Project

Supplier Name:	FLSmdith GmbH
SDR Code(s):	P01-B01
Equipment / Tag Number(s):	A-5304
Document Title:	Buyer's Data Sheets
Supplier Document No:	

Supplier's Revision Record

Rev	Date	Issue State	By	Checked	Approved
2	17 Dez 2017	Revised as per comments	Reinprecht	Reinprecht	Reinprecht
1	10 Nov 2017	Revised as per comments	Reinprecht	Reinprecht	Reinprecht
0	19 Okt 2017	Submitted for approval	Baumann	Reinprecht	Reinprecht

Project Document Number

Project Number	Purchase Order Number	Seq. No.	Project Rev.
172784	- 0698-001	- SD - 000008	2

SUPPLIER DOCUMENT REVIEW STATUS

Purchaser's review of Supplier's documents does not relieve Supplier of the responsibility for correctness under the Purchase Order. Permission to proceed does not constitute acceptance of design, detail and calculations, test methods or materials developed or selected by the Supplier and does not relieve the Supplier from full compliance with the Purchase Order or any other obligations, nor detract from any of the Purchaser's rights.

Purchaser's Review Stamp

CB&I RNP DCU Plant Project No. 172784		 By: LUCIANO.MOSCI ANESE Date: 20.12.2017
Engineering Review Status Code 1 - No Comments	<small>These comments do not relieve the supplier of his responsibility to meet the requirements of the PO.</small>	

Should the Supplier consider that any comments made by the Purchaser change the Scope of Supply, the Supplier shall advise the price and delivery implications of such changes within five working days of receipt. The Supplier must not incorporate such changes without prior approval of the Purchaser of the revised price and/or delivery period. RETROSPECTIVE CLAIMS WILL NOT BE CONSIDERED.

The document consists of this frontsheet plus 2 pages.

DATA SHEET - CLOSE PACKED HYDROCYCLONE

FLSmidth Krebs Ref. No. 1212175-29756-17 Sheet No. 1 Rev. 2 Date 07.12.2017

RNP DCU Pancevo plant

Tag-No. A-5304

CLOSE PACKED HYDROCYCLONE

GENERAL SCOPE

Vessel with internal Hold Down Plates and Cyclone Liners

Pressure Gauge at Inlet

Pressure Gauge at Overflow

EXCLUSIONS

nuts & bolts and gaskets at customer connection flanges

nuts & bolts and/or anchor bolts for installation on customer support frame or foundation

installation, commissioning and start-up

piping, cabling and integration in customers control system

DETAILS OF CLOSE PACKED HYDROCYCLONE

General Design	Design	Close Packed Desander	
	Vessel Diameter	in	24
	Hydrocyclone Inserts	gMAX2	
	Number of Hydrocyclone Inserts	30	
	Number of Blanks	0	
	Turn Down Design	No	
Process data	Flow rate	m ³ /h	186,9
	Fluid	Water	
	Solids	Green Coke Fines (SG=1.4 t/m ³)	
	Feed Solids content	% wt	3 (max)
	Pressure drop	Bar	1,8
	Cut D ₅₀	µ	8µ (pressure drop 1,8 Bar & solids max 3%)
Hydrocyclone Design	Model Number	gMAX2-3231 (C6208CC-.80/.62)	
	Inlet Area	sq. in	0,58
	Vortex Finder Size	in	0,8
	Material	90% Alumina Ceramic (CC) / Silica Dioxide (SiO ₂)	
	Cyclone Apex Size	in	0,625
	Vesel Apex	in	3/4 Silicon Carbide
Vessel Design	Nominal Diameter	mm	609,6 / 24 in (24 in)
	Design Pressure	Bar	8,6
	Design Temperature	°C	100
	Design Specification	FLSmidth Krebs Standard Design	
		ASME Section VIII Div. 1	
	Flanges at customer connections	ANSI	
	Connections for	Feed / Overflow / Underflow	
		Pressure Gauge	
	Weight empty	kg	1000
	Weight operating	kg	1255
	Height	mm	2732
	Width (Flange/Flange)	mm	1000
	Material Shell	SA-333 Gr.6 / SA-516 Gr.70	
	Material Hold Down Plate	Stainless Steel 316L	
	Material Flanges	SA-350 Gr.LF2	
	Material Nuts & Bolts	SA-320 Gr.L7 / SA194 Gr.4L	
	Material Gaskets	SS316 / Graphit	
	Coating	as per customer specification 190687-00-ME-SP-00004 A1>A3	
	Corrosion Allowance	mm	3,2
Reference Drawing	172784-0698-001-SD-000010 - 000013		
Simulation(s)	172784-0698-001-SD-000009		



SUPPLIER DOCUMENT COVER SHEET



RNP DCU Plant Project

Supplier Name:	FLSmdith GmbH
SDR Code(s):	P01-E04,F02
Equipment / Tag Number(s):	A-5304
Document Title:	Detail General Arrangement Drawing
Supplier Document No:	A 1845 0000

Supplier's Revision Record

Rev	Date	Issue State	By	Checked	Approved
3	14 Mär 2018	Revised	Siegl	Reinprecht	Reinprecht
2	07 Feb 2018	Revised	Siegl	Reinprecht	Reinprecht
1	08 Jan 2018	Revised	Siegl	Reinprecht	Reinprecht
0	09 Nov 2017	Submitted for approval	Siegl	Reinprecht	Novotny


Project Document Number

Project Number	Purchase Order Number	Seq. No.	Project Rev.
172784	- 0698-001	- SD - 000012	3

SUPPLIER DOCUMENT REVIEW STATUS

Purchaser's review of Supplier's documents does not relieve Supplier of the responsibility for correctness under the Purchase Order. Permission to proceed does not constitute acceptance of design, detail and calculations, test methods or materials developed or selected by the Supplier and does not relieve the Supplier from full compliance with the Purchase Order or any other obligations, nor detract from any of the Purchaser's rights.

Purchaser's Review Stamp

CB&I RNP DCU Plant Project No. 172784		 By: CHARLOTTE.PA RRA Date: 29.3.2018
Engineering Review Status Code 1 - No Comments	<small>These comments do not relieve the supplier of his responsibility to meet the requirements of the PO.</small>	

Should the Supplier consider that any comments made by the Purchaser change the Scope of Supply, the Supplier shall advise the price and delivery implications of such changes within five working days of receipt. The Supplier must not incorporate such changes without prior approval of the Purchaser of the revised price and/or delivery period. RETROSPECTIVE CLAIMS WILL NOT BE CONSIDERED.

The document consists of this frontsheet plus 6 pages.

INNOWELD				STÜCKLISTE / PART LIST				Desander Vessel				Auftrag: 6919	
METALLVERARBEITUNG Ges.m.b. H A-8682 HÖNIGSBERG				zu Zeichnung / apparting to drawing				A 1845 0000		Rev. 3		Pos. 1	
Erstellt/Prepared : 22.02.2018 Siegl				Geprüft / Reviewed : 22.02.2018 Novotny				Gesamtgewicht / Total Weight				1.019 kg	
Rev	Pos. Item	Stück Pieces	Gegenstand Object	Norm Standard	Werkstoff Material	Werkstoff Norm Material Standard	Abmessungen / Dimensions (Dicke/Ø x Breite x Länge)			Gewicht Weight	Attest Cert.	Bemerkung Note	
	001	1	Blindflansch BLIND FLANGE	ASME B16.5	SA-350 Gr.LF2	SA-350	24"	CLASS 150	RF	190,0	3.1		
	002	1	Überschiebflansch SLIP-ON FLANGE	ASME B16.5	SA-350 Gr.LF2	SA-350	24"	CLASS 150	RF	100,0	3.1		
	003	1	Nahtloses Rohr SEAMLESS PIPE	-	SA-333 Gr.6	SA-333	Ø 609.6	12.7	1103	200,0	3.1		
	004	1	Gewölbter Boden ELLIPTICAL HEAD (2:1)	ASME VIII, Div.1, UG-79, UG-81, UCS-79	SA-516 Gr.70 NORMALIZED	SA-516	Ø 609.6	12 EW 10 min.	Straight Flange h=40	50,0	3.1		
	005	1	Blech (Filterplatte) PLATE (FILTERSHEET)	-	SA-240 316L	SA-240	Ø 580		32	34,0	3.1		
	006	1	Blech (Filterplatte) PLATE (FILTERSHEET)	-	SA-240 316L	SA-240	Ø 580		25	44,0	3.1		
	007	2	Blech PLATE	-	SA-516 Gr.70 NORMALIZED	SA-516	Ø 340 Ø 349	Ø 225 Ø 234	10	8,0	3.1		
	008	2	Nahtloses Rohr SEAMLESS PIPE	-	SA-333 Gr.6	SA-333	Ø 219.1	12.7	128	15,5	3.1		
	009	2	Vorschweißflansch WELDING NECK FLANGE	ASME B16.5	SA-350 Gr.LF2	SA-350	8" SCH.XS	CLASS 150	RF	35,4	3.1		
1	010	1	Nahtloses Rohr SEAMLESS PIPE	-	SA-333 Gr.6	SA-333	Ø 114.3	8.56	84	1,9	3.1		
1	011	1	Schmiedestück FORGING	-	SA-350 Gr.LF2	SA-350	Ø 228.6	Ø 54	76	10,0	3.1		
	012	1	Schmiedestück FORGING	-	SA-350 Gr.LF2	SA-350	Ø 228.6	Ø 79.4	178	14,0	3.1		
	013	2	Nahtloses Rohr SEAMLESS PIPE	-	SA-333 Gr.6	SA-333	Ø 21.3	4.78	150	0,6	3.1		
	101	1	Rundstahl ROD STEEL	DIN 1013	1.4404	EN 10088	Ø 16		441	0,7	-		
	102	6	Rundstahl ROD STEEL	DIN 1013	1.4404	EN 10088	Ø 12		17	0,1	-		

INNOWELD METALLVERARBEITUNG Ges.m.b. H A-8682 HÖNIGSBERG				STÜCKLISTE / PART LIST zu Zeichnung / apparting to drawing				Desander Vessel A 1845 0000 Rev. 3				Auftrag: 6919 Pos. 1	
Erstellt/Prepared : 22.02.2018 Siegl				Geprüft / Reviewed : 22.02.2018 Novotny				Gesamtgewicht / Total Weight				1.019 kg	
Rev	Pos. Item	Stück Pieces	Gegenstand Object	Norm Standard	Werkstoff Material	Werkstoff Norm Material Standard	Abmessungen / Dimensions (Dicke/Ø x Breite x Länge)			Gewicht Weight	Attest Cert.	Bemerkung Note	
	103	6	Blech PLATE	-	1.4404	EN 10088	10	acc. to dwg.		3,0	-		
	104	6	Blech PLATE	-	1.4404	EN 10088	10	acc. to dwg.		3,8	-		
	105	30	Buchse BUSHING			Krebs Engineers				1,7	-	Beistellteil Krebs SUPPLY BY Krebs	
	106	30	Dichtung GASKET			Krebs Engineers				0,4	-	Beistellteil Krebs SUPPLY BY Krebs	
	107	30	Dichtung GASKET			Krebs Engineers				0,4	-	Beistellteil Krebs SUPPLY BY Krebs	
	108	30	Scheibe WASHER			Krebs Engineers				0,4	-	Beistellteil Krebs SUPPLY BY Krebs	
	109	30	Zyklon CYCLONE		GMAX2 Cyclone with 92% Alumina	Krebs Engineers				158,0	-	Beistellteil Krebs SUPPLY BY Krebs	
	110	30	Dichtung GASKET			Krebs Engineers				0,4	-	Beistellteil Krebs SUPPLY BY Krebs	
	111	1	APEX LINER		Chlorobutyl	Krebs Engineers				1,0	-	Beistellteil Krebs SUPPLY BY Krebs	
	112	1	APEX INSERT		Silicon Carbide	Krebs Engineers				0,5	-	Beistellteil Krebs SUPPLY BY Krebs	
	201	4	Blech PLATE	-	SA-516 Gr.70 NORMALIZED	SA-516	10	135	160	6,8	-		
3	202	4	Winkelstahl L-PROFILE	EN 10056	S235JR	EN 10025-2	L80x10	1347		65,0	-		
3	203	4	Blech PLATE	-	S235JR	EN 10025-2	15	90	150	8,5	-		
2	204		Entfällt CANCELLED	-	-	-	-	-	-		-		
	205	2	Blech (Erdungslasche) PLATE (EARTHING LUG)	-	SA-240 304	SA-240	4	30	160	0,3	-		
	206	1	Blech PLATE	-	SA-240 304	SA-240	4	280	360	3,2	-		

INNOWELD METALLVERARBEITUNG Ges.m.b. H A-8682 HÖNIGSBERG				STÜCKLISTE / PART LIST zu Zeichnung / apparting to drawing			Desander Vessel A 1845 0000 Rev. 3				Auftrag: 6919 Pos. 1	
Erstellt/Prepared : 22.02.2018 Siegl				Geprüft / Reviewed : 22.02.2018 Novotny			Gesamtgewicht / Total Weight				1.019 kg	
Rev	Pos. Item	Stück Pieces	Gegenstand Object	Norm Standard	Werkstoff Material	Werkstoff Norm Material Standard	Abmessungen / Dimensions (Dicke/Ø x Breite x Länge)			Gewicht Weight	Attest Cert.	Bemerkung Note
	207	1	Fabrikschild (Kunde) NAME PLATE (CLIENT)	-	304 poliert / polished	SA-240	3	140	200	0,7	-	
	208	1	Fabrikschild (FLS Krebs) NAME PLATE (FLS KREBS)	-	304	SA-240	3	125	200	0,6	-	
	209	1	Blech PLATE	-	SA-516 Gr.70 NORMALIZED	SA-516	15	80	219	2,0	-	Schwenkvorrichtung DAVIT
	210	1	Blech PLATE	-	SA-516 Gr.70 NORMALIZED	SA-516	15	80	117	1,1	-	Schwenkvorrichtung DAVIT
	211	1	Blech PLATE	-	SA-516 Gr.70 NORMALIZED	SA-516	15	80	120	1,1	-	Schwenkvorrichtung DAVIT
	212	2	Blech PLATE	-	SA-516 Gr.70 NORMALIZED	SA-516	15	50	65	0,8	-	Schwenkvorrichtung DAVIT
	213	1	Rundstahl BAR	-	S235JR	EN 10025-2	Ø 50		894	13,9	-	Schwenkvorrichtung DAVIT
	214	1	Scheibe WASHER	-	S235JR	EN 10025-2	Ø 74	Ø 51	15	0,2	-	Schwenkvorrichtung DAVIT
	215	1	Scheibe WASHER	-	Messing BRASS	-	Ø 75	Ø 51	2	0,1	-	Schwenkvorrichtung DAVIT
	301	1 +1 spare	Spiraldichtung SPIRAL GASKET	ASME B16.20	SS 316L / Graphit	-	24"	Class 150	s=4.5	1,0	-	Innen- und Aussenring INNER+OUTER RING
	302	20 +2 spare	Gewindebolzen STUD BOLT	ASME B16.5	SA-320 Gr.L7	SA-320	1 1/4"- UNC		178	22,0	3.1	
	303	40 +4 spare	Sechskantmutter HEXAGON NUT	ASME B16.5	SA-194 Gr.4L	SA-194	1 1/4"- UNC			9,0	3.1	
	304	1 +1 spare	Spiraldichtung SPIRAL GASKET	ASME B16.20	SS 316L / Graphit	-	4"	Class 150	s=4.5	0,1	-	Innen- und Aussenring INNER+OUTER RING
	305	8 +1 spare	Gewindebolzen STUD BOLT	ASME B16.5	SA-320 Gr.L7	SA-320	5/8"- UNC		95	1,1	3.1	
	306	16 +2 spare	Sechskantmutter HEXAGON NUT	ASME B16.5	SA-194 Gr.4L	SA-194	5/8"- UNC			0,5	3.1	
	307	12	Gewindebolzen STUD BOLT	DIN 976	A4-50	EN ISO 3506-1	M10		75	0,6	-	Mit Vierkant gem. Zchnng. WITH SQUARE END ACC. TO DWG.

INNOWELD				STÜCKLISTE / PART LIST				Desander Vessel			Auftrag: 6919		
METALLVERARBEITUNG Ges.m.b. H A-8682 HÖNIGSBERG				zu Zeichnung / apparting to drawing				A 1845 0000		Rev. 3		Pos. 1	
Erstellt/Prepared : 22.02.2018 Siegl				Geprüft / Reviewed : 22.02.2018 Novotny				Gesamtgewicht / Total Weight			1.019 kg		
Rev	Pos. Item	Stück Pieces	Gegenstand Object	Norm Standard	Werkstoff Material	Werkstoff Norm Material Standard	Abmessungen / Dimensions (Dicke/Ø x Breite x Länge)		Gewicht Weight	Attest Cert	Bemerkung Note		
	308	24	Sechskantmutter HEXAGON NUT	ISO 4032	A4-50	EN ISO 3506-2	M10		1,4	-			
	309	12	Scheibe WASHER	ISO 7090	SS		A11		0,1				
	310	2	Stopfen PLUG	DIN 906	CS verzinkt / GALVANIZED	-	1/8"		0,1	-			
	311	1	Splint COTTER PIN	ISO 1234	CS verzinkt / GALVANIZED	-	6.3	63	0,1	-	Schwenkvorrichtung DAVIT		
1	312	1	Bolzen BOLT	ISO 2340	V2A	-	18	85	0,1	-	Schwenkvorrichtung DAVIT		
	313	2	Scheibe WASHER	DIN 1441	SS		A19		0,1	-	Schwenkvorrichtung DAVIT		
	314	3	Splint COTTER PIN	ISO 1234	CS verzinkt / GALVANIZED	-	5	32	0,1	-	Schwenkvorrichtung DAVIT		
	315	1	Augenschraube EYE BOLT	DIN 444 A	4.6 verzinkt / GALVANIZED	-	M20	280	0,8	-	Schwenkvorrichtung DAVIT		
1	316	1	Bügelmutter LIFTING NUT	DIN 28129	C35 verzinkt / GALVANIZED	-	M20		0,6	-	Schwenkvorrichtung DAVIT		
1	317	40 +4 spare	Scheibe WASHER	ISO 7090	CS verzinkt / GALVANIZED		A33		0,5				
1	318	16 +2 spare	Scheibe WASHER	ISO 7090	CS verzinkt / GALVANIZED		A16		0,2				
	401	2	2-teiliger Kugelhahn SPLIT BODY BALL VALVE	-	SS 316	-	1/2"-NPT	75	0,5	3.1			
1	402	2	Manometer PRESSURE GAUGE	-	SS 316L	WIKA 233.50 Nominal size: 100 mm Scale range: 0...4 barg	1/2"-NPT		2,0	3.1	Schutzart IP65 SAFETY CLASS IP65 Gehäuse gefüllt mit: CASING FILLED WITH: Silicon Oil M50		

INNOWELD METALLVERARBEITUNG Ges.m.b. H A-8682 HÖNIGSBERG				STÜCKLISTE / PART LIST zu Zeichnung / apparting to drawing				Desander Vessel A 1845 0000 Rev. 3			Auftrag: 6919 Pos. 1	
Erstellt/Prepared : 22.02.2018 Siegl				Geprüft / Reviewed : 22.02.2018 Novotny				Gesamtgewicht / Total Weight			1.019 kg	
Rev	Pos. Item	Stück Pieces	Gegenstand Object	Norm Standard	Werkstoff Material	Werkstoff Norm Material Standard	Abmessungen / Dimensions (Dicke/Ø x Breite x Länge)		Gewicht Weight	Attest Cert.	Bemerkung Note	
1	<u>NOTE:</u> THIS PART LIST CONTAINS THE ITEMS SHOWN IN DRAWINGS 172784-0698-001-SD-000012 AND 172784-0698-001-SD-000013 <u>Bemerkung:</u> Diese Stückliste beinhaltet sämtliche Positionen der Zeichnungen 172784-0698-001-SD-000012 und 172784-0698-001-SD-000013											



SUPPLIER DOCUMENT COVER SHEET



RNP DCU Plant Project

Supplier Name:	FLSmidth Krebs GmbH
SDR Code(s):	P01-G02
Equipment / Tag Number(s):	A-5304
Document Title:	Assembly Arrangement 30 Model GMAX2-3231 Desander Vessel
Supplier Document No:	DA0224-PNC-g165470E

Supplier's Revision Record

Rev	Date	Issue State	By	Checked	Approved
2	07 Feb 2018	Revised as per comments	Reinprecht	Reinprecht	Reinprecht
1	19 Jan 2008	Revised as per comments	Reinprecht	Reinprecht	Reinprecht
0	19 Sep 2017	Submitted for approval	Reinprecht	Reinprecht	Reinprecht

Project Document Number

Project Number	Purchase Order Number	Seq. No.	Project Rev.
172784	- 0698-001	- SD - 000016	2

SUPPLIER DOCUMENT REVIEW STATUS

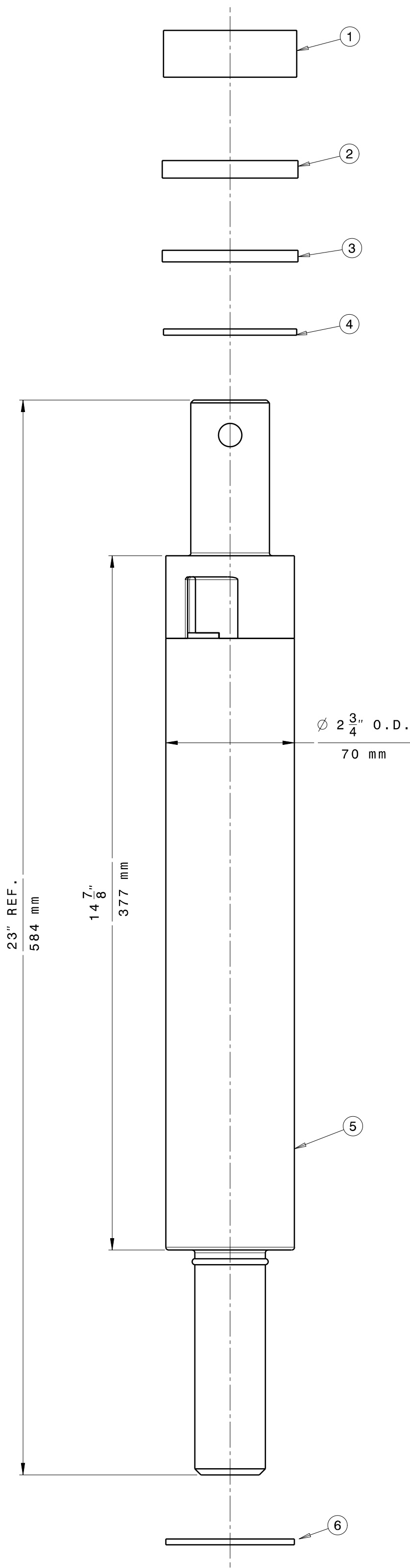
Purchaser's review of Supplier's documents does not relieve Supplier of the responsibility for correctness under the Purchase Order. Permission to proceed does not constitute acceptance of design, detail and calculations, test methods or materials developed or selected by the Supplier and does not relieve the Supplier from full compliance with the Purchase Order or any other obligations, nor detract from any of the Purchaser's rights.

Purchaser's Review Stamp

CB&I RNP DCU Plant Project No. 172784		 By: LUCIANO.MOSCI ANESE Date: 7.3.2018
Engineering Review Status Code 1 - No Comments	<small>These comments do not relieve the supplier of his responsibility to meet the requirements of the PO.</small>	

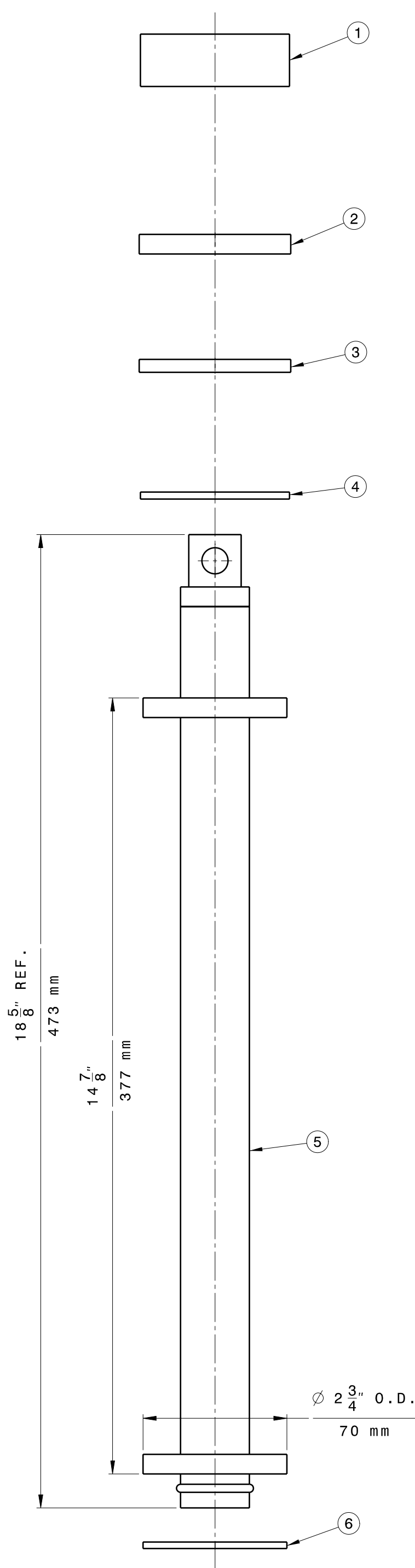
Should the Supplier consider that any comments made by the Purchaser change the Scope of Supply, the Supplier shall advise the price and delivery implications of such changes within five working days of receipt. The Supplier must not incorporate such changes without prior approval of the Purchaser of the revised price and/or delivery period. RETROSPECTIVE CLAIMS WILL NOT BE CONSIDERED.

The document consists of this frontsheet plus 2 pages.



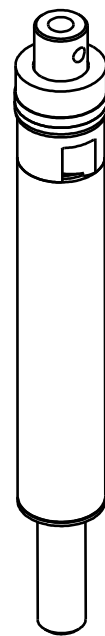
GMAX SYSTEMS CYCLONE
MODEL GMAX2-3231

Scale: 1:2



GMAX SYSTEMS CYCLONE
MODEL GMAX2-3231-BLANK

Scale: 1:2



BILL OF MATERIAL: GMAX2-3231-.8			
No.	Part Number	Product Description	Quantity
1	C1537-SS	BUSHING FOR GMAX2 CYCLONE, STAINLESS STEEL.	1
2	C7079G-RV75-D	3/8in GASKET, 75 DUROMETER VITON.	1
3	C7079G-RV75-C	1/4in GASKET, 75 DUROMETER VITON.	1
4	C7265-2-SS	FLAT WASHER, 316L STAINLESS STEEL.	1
5	C6208CC-.80/.62	GMAX2 CYCLONE, WITH .577 SQUARE INCH INLET, .800" I.D. VORTEX FINDER AND .625in I.D. APEX, 92 PERCENT ALUMINA.	1
6	C7079G-RV75-A	1/8in GASKET, 75 DUROMETER VITON.	1





BILL OF MATERIAL: GMAX2-3231-1-.8			
No.	Part Number	Product Description	Quantity
1	C1537-SS	BUSHING FOR GMAX2 CYCLONE, STAINLESS STEEL.	1
2	C7079G-RV75-C	1/4in GASKET, 75 DUROMETER VITON.	2
3	C7079G-RV75-C	1/4in GASKET, 75 DUROMETER VITON.	
4	C7265-2-SS	FLAT WASHER, 316L STAINLESS STEEL.	1
5	C6208CC-.80/.62	GMAX2 CYCLONE, WITH .577 SQUARE INCH INLET, .800" I.D. VORTEX FINDER AND .625in I.D. APEX, 92 PERCENT ALUMINA.	1
6	C7079G-RV75-A	1/8in GASKET, 75 DUROMETER VITON.	1

BILL OF MATERIAL: GMAX2-3231-.5			
No.	Part Number	Product Description	Quantity
1	C1537-SS	BUSHING FOR GMAX2 CYCLONE, STAINLESS STEEL.	1
2	C7079G-RV75-D	3/8in GASKET, 75 DUROMETER VITON.	1
3	C7079G-RV75-C	1/4in GASKET, 75 DUROMETER VITON.	1
4	C7265-2-SS	FLAT WASHER, 316L STAINLESS STEEL.	1
5	C6208CC-.50/.62	GMAX2 CYCLONE, WITH .577 SQUARE INCH INLET, .500" I.D. VORTEX FINDER AND .625in I.D. APEX, 92 PERCENT ALUMINA.	1
6	C7079G-RV75-A	1/8in GASKET, 75 DUROMETER VITON.	1

BILL OF MATERIAL: GMAX2-3231-1-.5			
No.	Part Number	Product Description	Quantity
1	C1537-SS	BUSHING FOR GMAX2 CYCLONE, STAINLESS STEEL.	1
2	C7079G-RV75-C	1/4in GASKET, 75 DUROMETER VITON.	2
3	C7079G-RV75-C	1/4in GASKET, 75 DUROMETER VITON.	1
4	C7265-2-SS	FLAT WASHER, 316L STAINLESS STEEL.	1
5	C6208CC-.50/.62	GMAX2 CYCLONE, WITH .577 SQUARE INCH INLET, .500" I.D. VORTEX FINDER AND .625in I.D. APEX, 92 PERCENT ALUMINA.	1
6	C7079G-RV75-A	1/8in GASKET, 75 DUROMETER VITON.	1

BILL OF MATERIAL: GMAX2-3231-BK			
Number	Part Number	Product Description	Quantity
1	C1537-SS	BUSHING FOR GMAX2 CYCLONE, STAINLESS STEEL.	1
2	C7079G-RV75-J	3/8in GASKET, 75 DUROMETER VITON.	1
3	C7079G-RV75-H	1/4in GASKET, 75 DUROMETER VITON.	1
4	C7265-2-SS	FLAT WASHER, 316L STAINLESS STEEL.	1
5	C9412-SS	BLANK FOR CYCLONE, 316L STAINLESS STEEL.	1
6	C7079G-RV75-E	1/8in GASKET, 75 DUROMETER VITON.	1

BILL OF MATERIAL: GMAX2-3231-1-BK			
No.	Part Number	Product Description	Quantity
1	C1537-SS	BUSHING FOR GMAX2 CYCLONE, STAINLESS STEEL.	1
2	C7079G-RV75-H	1/4in GASKET, 75 DUROMETER VITON.	2
3	C7079G-RV75-H	1/4in GASKET, 75 DUROMETER VITON.	
4	C7265-2-SS	FLAT WASHER, 316L STAINLESS STEEL.	1
5	C9412-SS	BLANK FOR CYCLONE, 316L STAINLESS STEEL.	1
6	C7079G-RV75-E	1/8in GASKET, 75 DUROMETER VITON.	1

15	9-24-15	ADDED .50 INCH VORTEX CYCLONE				
14	5-1-13	ADDED CYCLONE MODEL 3231-1 & 3231-BLANK-1 ON SHEET NO. 2				
13	6-15-11	ADDED ITEM NO.7 TO BOM 3231-SPECIAL				
12	4-28-11	REMOVED PART NO. C7079G-RV75-M				
11	1-27-11	ADDED PART NO. C7079G-RV75-M				
10	1-5-10	CHANGED COMPANY ADDRESS IN THE TITLE BLOCK				
9	12-11-09	ADDED WEIGHT FOR CYCLONE				
8	11-13-09	CHANGED ITEM NO. 2 & 3 FOR BLANK, ADDED GASKETS AS SPECIAL PARTS AVAILABLE				
7	7-9-08	FOR REVISION HISTORY SEE REV 6,UPDATED TO GMAX SYSTEM				
No.	DATE	REVISION DESCRIPTION				
		 <div style="float: right; text-align: right;">5505 WEST GILLETTE ROAD TUCSON, AZ 85743 www.krebs.com</div>				
REVISION Rev. By: MID						
Approval Date: 09/24/2015		Scale: NOTED	Drawn By: JJT	Date Drawn: 2-17-05	Orig. Appd. By: SNP JFB	Sheet: 1 OF 1
Approved By: 		GENERAL PARTS ARRANGEMENT KREBS CYCLONES MODEL GMAX2-3231 & GMAX2-3231-BLANK				
 © FLSmidth KREBS 2015		DWG NO.		3231		

NOTES:

1. CYCLONE DESIGNED FOR USE IN VESSEL, REF. DRAWING SK1892.
2. BARE WEIGHT GMAX2-3231: 131b [5.9kg]
GMAX2-3231-BLANK: 71b [3.2kg]

THIS DRAWING IS THE EXCLUSIVE PROPERTY OF FL5MIDTH KREBS, TUCSON ARIZONA, AND CONTAINS INFORMATION WHICH IS PROPRIETARY TO FL5MIDTH KREBS. IT IS NOT TO BE COPIED OR DUPLICATED IN ANY MANNER, OR USED IN CONNECTION WITH THE MANUFACTURE AND/OR SALE OF ANY APPARATUS OR PARTS THEREOF, OR DISSEMINATED TO ANY THIRD PARTY WITHOUT THE PRIOR WRITTEN CONSENT OF FL5MIDTH KREBS. ANY AUTHORIZED REPRODUCTION OF THIS DRAWING, OR ANY PORTION THEREOF, SHALL INCLUDE THIS NOTICE.