



DATA SHEET FOR LEVEL GAUGES										43LG -426	
Rev	Units				Units						
1	<u>GENERAL :</u>				60	<u>GENERAL :</u>					
2	Tag number				43LG -426				61	Plant / Unit	NIS_PANCEVC/S-4300 - MHC/DHT
3	Service				DA-4305 FRACTIONATOR				62	Location	Pancevo, Serbia
4	Equipment				DA-4305				63	Zone	2
5	P&I Drawing Number				02163-50-43-0037				64	Gas group	IIC
6									65	Temp category	T3
7									66		
8	<u>LEVEL GAUGE</u>				67	<u>MATERIAL</u>					
9	Type				Magnetic - liquid level				68	Body material	SS 316/316L
10	Std. dwg. level gauge				02163-60-00-0601 sh. 251				69	Flange material	SS 316/316L
11	Flanges				ASME B16.5 , RF				70	Glass material	
12	Flange face finish				3.2- 6.3				71	Float material	Titanium
13	Process connection				in / LBS 1 300				72	Protective sheet	
14	Drain connection				in / LBS 1 300				73		
15	Vent connection				in / LBS 1 300				74		
16	Nozzle orientation				Side-Side				75		
17									76		
18	Centre to centre length				mm 800				77	<u>ACCESSORIES</u>	
19	Visible length				mm				78		
20	Number of sections								79		
21									80		
22									81		
23									82		
24									83		
25									84		
26									85		
27									86		
28									87		
29									88		
30	<u>PROCESS DATA:</u>				89	<u>SPECIAL REQUIREMENTS</u>					
31	Medium upper / lower				HC+Steam /UCO				90	NACE requirements	NO
32	Phase upper / lower				Gas/Vapor / Liquid				91	Environmental requirements	
33	Operating conditions				Min Norm Max				92	Material certificate	EN10204 3.1
34	Pressure				barg 1,7				93	Special req. for service	
35	Temperature				°C 371				94	Pressure test	YES
36	Density upper fluid				kg/ml				95	Welds examination	YES - (see tech. spec)
37	Density lower fluid				kg/ml 637				96		
38	Viscosity upper fluid				cP				97		
39	Viscosity lower fluid				cP				98		
40	Corrosive upper / lower fluid				No / No				99		
41	Toxic upper / lower fluid				No / No				100		
42	Containing particles								101		
43									102		
44	Freezing point				°C				103		
45	Boiling point				°C				104		
46									105		
47									106	<u>NON-VENDOR RELATED INFO:</u>	
48									107	Winterizing / Heating	ST
49									108	Tracing temperature	°C
50									109		
51	Design pressure				barg 4,5				110		
52	Design temperature min / max				°C -28 / 405				111		
53									112		
54	<u>PURCHASE DATA:</u>				113	<u>REMARKS:</u>					
55	Manufacturer	KLINGER			114						
56	Model number	TC-Magnetic			115						
57	Serial number				116						
58	Supplier				117						
59	Item number	45			118						

Eng. by: CB&I Lummus s.r.o., Brno, Czech Republic

Client: NIS Petroleum Industry of Serbia, Pancevo, Serbia

Page / Pages: 1 / 1

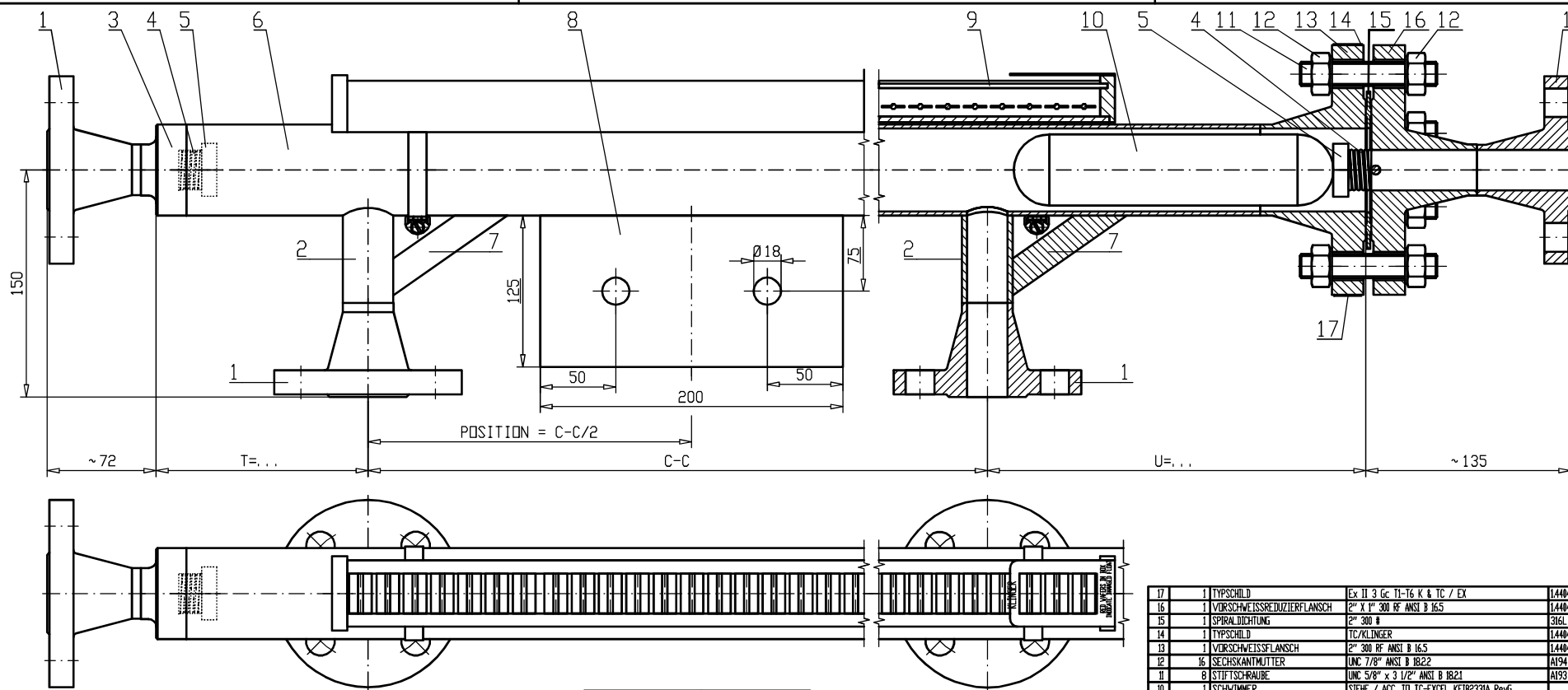
Dwg no.: 02163-3300A

Req. no. 3300A

Rev. 2

3300.psr 10/02/03 rev 0
Print Date: 4.8.2011
Spec: 3300
Level Gauges

Item	TAG	Qty	Pipe Size INS	Sched	CC MM	Process Conns	Drain Conn	Vent Conn	Flanges	Rating	U DIM	T DIM	Chamber supports	Branch Supports	Internal bore	Volume	PS.V
											mm	mm			mm	mm3	bar/litre
31	43LG- 414	1	2,5	160	3000	1,5	1	1	ANSI B16.5 RTJ	1500	320	200	Yes	Yes	53,97	8122276	1007,16
32	43LG- 415	1	2,5	160	600	1,5	1	1	ANSI B16.5 RTJ	1500	320	200			53,97	2631851	326,35
33	43LG- 416A	1	2	10	2750	1	1	1	ANSI B16.5 RF	300	235	175	Yes	Yes	54,78	7581599	68,23
34	43LG- 416B	1	2	10	2750	1	1	1	ANSI B16.5 RF	300	235	175	Yes	Yes	54,78	7581599	68,23
35	43LG- 416C	1	2	10	2750	1	1	1	ANSI B16.5 RF	300	235	175	Yes	Yes	54,78	7581599	68,23
36	43LG- 417	1	2	10	2900	1	1	1	ANSI B16.5 RF	300	250	175	Yes	Yes	54,78	7970481	215,20
37	43LG- 419	1	2	10	350	1	1	1	ANSI B16.5 RF	300	400	175			54,78	2314015	62,48
38	43LG- 420	1	2	10	550	1	1	1	ANSI B16.5 RF	300	450	200			54,78	2962152	79,98
39	43LG- 421	1	2	10	3500	1	1	1	ANSI B16.5 RF	300	235	175	Yes	Yes	54,78	9349245	84,14
40	43LG- 422A	1	2	10	2950	1	1	1	ANSI B16.5 RF	300	270	175	Yes	Yes	54,78	8135462	28,47
41	43LG- 422B	1	2	10	2950	1	1	1	ANSI B16.5 RF	300	270	175	Yes	Yes	54,78	8135462	28,47
42	43LG- 423A	1	2	10	3000	1	1	1	ANSI B16.5 RF	300	380	175	Yes	Yes	54,78	8512559	191,53
43	43LG- 423B	1	2	10	3000	1	1	1	ANSI B16.5 RF	300	380	175	Yes	Yes	54,78	8512559	191,53
44	43LG- 424	1	2	10	1200	1	1	1	ANSI B16.5 RF	300	400	175	Yes		54,78	4317347	94,98
45	43LG- 426	1	2	10	800	1	1	1	ANSI B16.5 RF	300	500	175			54,78	3610289	16,25
46	43LG- 427	1	2	10	2400	1	1	1	ANSI B16.5 RF	300	300	175	Yes	Yes	54,78	6909894	24,18
47	43LG- 429A	1	2	10	2250	1	1	1	ANSI B16.5 RF	300	475	175	Yes	Yes	54,78	6968816	87,11
48	43LG- 429B	1	2	10	2250	1	1	1	ANSI B16.5 RF	300	475	175	Yes	Yes	54,78	6968816	87,11
49	43LG- 430	1	2	10	3450	1	1	1	ANSI B16.5 RF	300	320	175	Yes	Yes	54,78	9431735	42,44
50	43LG- 431A	1	2	10	2000	1	1	1	ANSI B16.5 RF	300	320	175	Yes		54,78	6014287	30,07
51	43LG- 431B	1	2	10	2000	1	1	1	ANSI B16.5 RF	300	320	175	Yes		54,78	6014287	30,07
52	43LG- 433	1	2	10	800	1	1	1	ANSI B16.5 RF	300	475	175			54,78	3551367	41,91
53	43LG- 435	1	2	10	550	1	1	1	ANSI B16.5 RF	300	380	175			54,78	2738250	60,24
54	43LG- 436	1	2	10	2350	1	1	1	ANSI B16.5 RF	300	235	200	Yes	Yes	54,78	6638855	146,05
55	43LG- 438	1	2	10	350	1	1	1	ANSI B16.5 RF	300	380	175			54,78	2266878	49,87
56	43LG- 439	1	2	10	550	1	1	1	ANSI B16.5 RF	300	235	175			54,78	2396506	52,72
57	43LG- 440	1	2	10	550	1	1	1	ANSI B16.5 RF	300	475	175			54,78	2785388	69,63
58	43LG- 441A	1	2	10	550	1	1	1	ANSI B16.5 RF	300	475	175			54,78	3044642	109,61
59	43LG- 441B	1	2	10	550	1	1	1	ANSI B16.5 RF	300	475	175			54,78	3044642	109,61
60	43LG- 441C	1	2	10	550	1	1	1	ANSI B16.5 RF	300	475	175			54,78	3044642	109,61



THE GAUGES TAG NO. 445LG-415 / 43LG-441A/B/C FITTED WITH TX TRANSMITTER KTX-AVK5/TEH-L700/M550-14-EX

- HALTELASCHE (200 x 125 x 6 MM) POS. 8 ERFORDERLICH AB M=1000MM
- 2 STREBEN (20 x 5 MM) POS. 7 ERFORDERLICH AB M=2500MM
- SCHWIMMER SIEHE TC-EXCEL TABELLE KFI82331A RevG
- MASS T / C-C / U SIEHE TC-EXCEL TABELLE KFI82331A RevG
- ZUL. BETRIEBSDRUCK (PS) SIEHE TC-EXCEL TABELLE KFI82331A RevG
- ZUL. BETRIEBSTEMPERATUR (TS) SIEHE TC-EXCEL TABELLE KFI82331A RevG

- CHAMBER SUPPORT (200 x 125 x 6 MM) POS. 8 REQUIRED FOR C-C?1000MM
- 2 BRANCH SUPPORTS (20 x 5 MM) POS. 7 REQUIRED FOR C-C?2500MM
- FLOAT SEE TC-EXCEL SPREAD SHEET KFI82331A RevG
- DIMENSION T / C-C / U SEE TC-EXCEL SPREAD SHEET KFI82331A RevG
- MAX. OPERATING PRESSURE (PS) SEE TC-EXCEL SPREAD SHEET KFI82331A RevG
- MAX. OPERATING TEMPERATURE (TS) SEE TC-EXCEL SPREAD SHEET KFI82331A RevG

DGRL 97/23/EG
PED 97/23/EC

Siehe TC-EXCEL KFI82331A RevG
Acc. TC-EXCEL KFI82331A RevG

Schweißangaben nach DIN EN ISO 15614
Welding data acc. to DIN EN ISO 15614

Grundwerkstoff Base metal	L4404 SS 316 L
Schweißzusatz Filler metal	AWS/ASME S9 ER 316L (SI) L4438
Schweißverfahren Welding process	M1 (MIG) M1 (MIG)

Zulässige Betriebsdaten
Max. operating parameters

Max. zul. Druck (PS) Max. operating pressure (PS)	Siehe TC-EXCEL KFI82331A RevG Acc. to TC-EXCEL KFI82331A RevG
Min./Max. Temperatur (TS) Min./Max. operating temperature (TS)	Siehe TC-EXCEL KFI82331A RevG Acc. to TC-EXCEL KFI82331A RevG
Prüfdruck (PT) Test pressure (PT)	PS x 1.5
DGRL 97/23/EG Fluidgruppe PED 97/23/EC Fluidgroup	1

KFI/82331A

TC Fluid Control Ltd
TC-Klinger Instrumentation Division
Dartford Kent England
Tel. No. +44 (0) 1322 622 400

17	1	TYPSCHEILD	Ex II 3 Gc II-16 K & TC / EX	L4404	TCNAMEPLATE3
16	1	VORSCHWEISSREDUZIERFLANSCH	2" X 1" 300 RF ANSI B 16.5	L4404	FLEGLRBP210300
15	1	SPIRAL DICHTUNG	2" 300 #	316L / GRAPHIT	DIVKGL34200300
14	1	TYPSCHEILD	TC/KLINGER	L4404	TCNAMEPLATE
13	1	VORSCHWEISSFLANSCH	2" 300 RF ANSI B 16.5	L4404	FLEGLVAR200300
12	16	SECHSKANTMUTTER	UNC 7/8" ANSI B 18.2	A194 8	VMEAP2124000078
11	8	STÜTSCHRAUBE	UNC 5/8" x 3 1/2" ANSI B 18.2	A193 B8	VMEAP2123058350
10	1	SCHWIMMER	SIEHE / ACC. TO TC-EXCEL KFI82331A RevG		ZSXXX
9	1	ANZEIGE		ST/STL/ALUMINIUM	MM
8	1	HALTELASCHE	SIEHE TEXT BOX / ACC. TEXT BOX	L4404	HHHALTEL
7	2	FLACHPROFIL	SIEHE TEXT BOX / ACC. TEXT BOX	L4404	PRE04010020005
6	1	ROHR	2" SCH 10S ANSI B 36.19	L4404	ROEGL060027N00
5	2	FALLSCHUTZKAPPE	HK 102092	P1FE	DTKTLP00700230
4	2	DAEMPFUNGSFEIDER	DF 2 X 25 X 15 X 3 MM	L430	VME0114251530
3	1	ROHRBOIDEN	SI=2,77MM/S2=2,77MM HE 101823	L4404	DTE04001018230
2	2	ROHR	1" SCH 10S ANSI B36.19	L4404	ROEGL030303N00
1	4	VORSCHWEISSFLANSCH	1" 300 RF ANSI B 16.5	L4404	FLEGLVAR100300
Pos.	Anzahl	Beschreibung	Sachnummer - Norm / Kurzbezeichnung	Werkstoff	Ident. Nr.
17	1	NAME PLATE	Ex II 3 Gc II-16 K & TC / EX	316 L	TCNAMEPLATE3
16	1	REDUCING FLANGE	2" X 1" 300 RF ANSI B 16.5	316 L	FLEGLRBP210300
15	1	SPIRAL WOUND GASKET	2" 300 #	316L / GRAPHIT	DIVKGL34200300
14	1	NAMEPLATE	TC/KLINGER	316 L	TCNAMEPLATE
13	1	WELDING NECK FLANGE	2" 300 RF ANSI B 16.5	316 L	FLEGLVAR200300
12	16	HEAVY HEXAGON NUT	UNC 7/8" ANSI B 18.2	A194 8	VMEAP2124000078
11	8	FULL THREAD STUD BOLT	UNC 5/8" x 3 1/2" ANSI B 18.2	A193 B8	VMEAP2123058350
10	1	FLOAT	SIEHE / ACC. TO TC-EXCEL KFI82331A RevG		ZSXXX
9	1	INDICATOR		ST/STL/ALUMINIUM	MM
8	1	SUPPORT BRACKET	SIEHE TEXT BOX / ACC. TEXT BOX	316 L	HHHALTEL
7	2	PROFILE	SIEHE TEXT BOX / ACC. TEXT BOX	316 L	PRE04010020005
6	1	PIPE	2" SCH 10S ANSI B 36.19	316 L	ROEGL060027N00
5	2	PROTECTIVE CAP	HK 102092	P1FE	DTKTLP00700230
4	2	DAMPING SPRING	DF 2 X 25 X 15 X 3 MM	30	VME0114251530
3	1	REDUCING TOP	SI=2,77MM/S2=2,77MM HE 101823	316 L	DTE04001018230
2	2	PIPE	1" SCH 10S ANSI B36.19	316 L	ROEGL030303N00
1	4	WELDING NECK FLANGE	1" 300 RF ANSI B 16.5	316 L	FLEGLVAR100300
Pos.	Quantity	Description	Part- or Identification No.	Material	Identity No.

Schutzvermerk nach DIN 94 beachten /
Copying of this document, and giving it to others and the use or communication of the
contents thereof, are forbidden without express authority. Offenders are liable to the
payment of damages. All rights are reserved in the event of the grant of a patent or

Maßstab/Scale	A2	Format/Size	A2
Maße ohne Toleranzangabe EN ISO 13920-BE Dimensions without tolerances EN ISO 13920-BE			
Benennung Title	MAGNETISCHE NIVEAUAUZEIGE MAGNETIC LEVEL GAUGE		
Zeichnungsnummer Figura	105249	Blatt Sheet	A12
Kopie 105226		Ersatz f. Z.-Nr.:	

CERTIFIED IN ACCORDANCE WITH CUSTOMER REQUIREMENTS
CUSTOMER:
REQ. ORDER NO.:

Datum/Date	Name
12/05/2011	KR
15/05/2011	MM
Datum/Date	Name
12/05/2011	KR
15/05/2011	MM
Datum/Date	Name
12/05/2011	KR
15/05/2011	MM
Datum/Date	Name
12/05/2011	KR
15/05/2011	MM

TC KLINGER